

# Cry of the Water

Dan Clark

Tell Florida DEP to Stop  
Permitting the Destruction of  
Southeast Florida Reefs

May 4, 2006

# Sewer Outfall

- Delray/Boynton Plant Permit to discharge partially treated sewage into the Ocean Expired Dec, 15, 2005
- Since that time they have been operating without a valid permit
- New permit has not been issued - the plant has not met all the requirements of the Clean Water Act



**6 Sewer Outfall Pipes pump over 300MGD of  
Partially Treated Sewage onto Reefs**



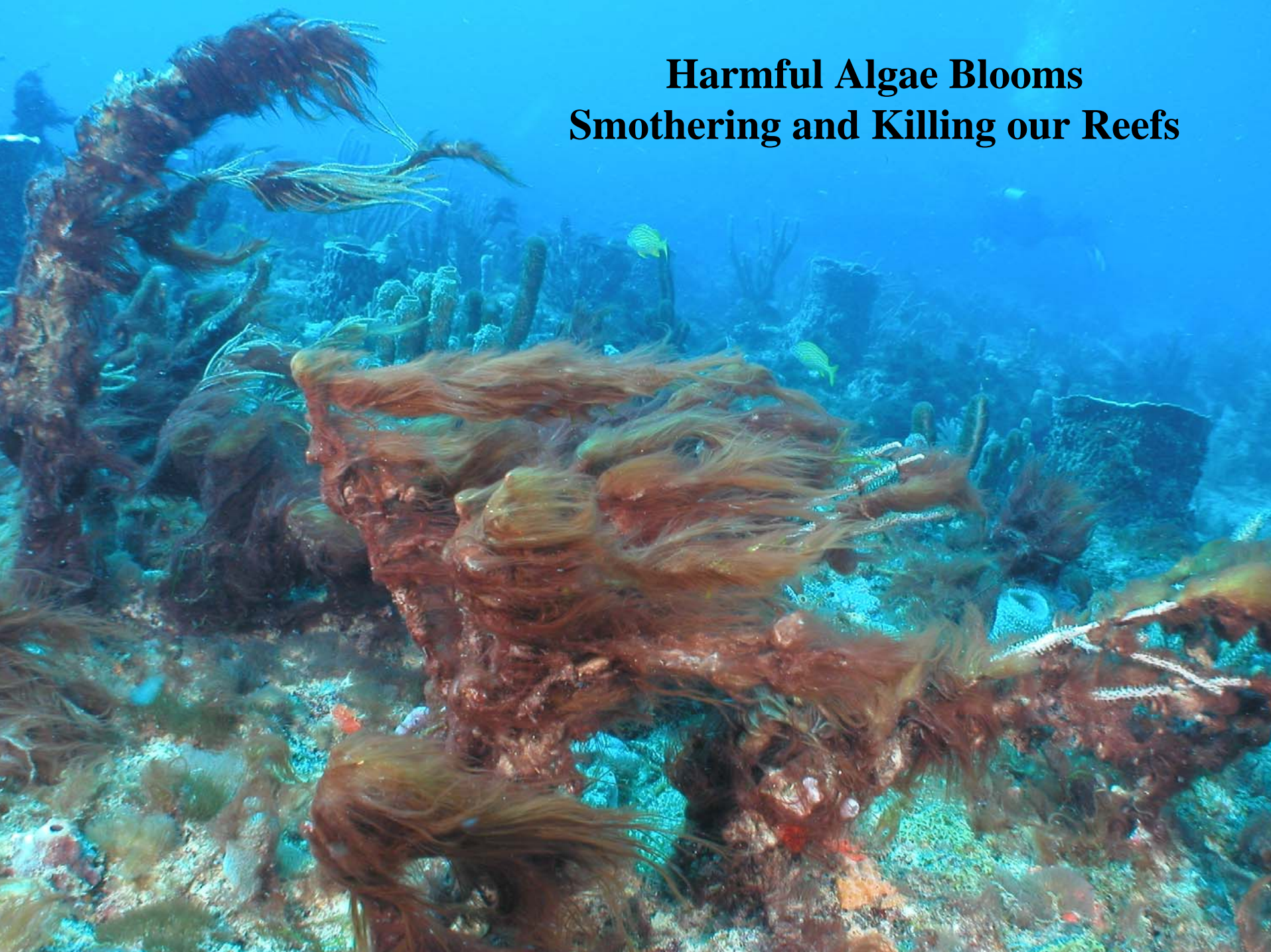
# **Broward County Sewer Outfall**

An underwater photograph of a coral reef. The water is clear and blue. In the foreground, a large, dark, oval-shaped fish is swimming towards the left. To its right, a smaller, striped fish is swimming. In the background, there are various other fish, including a large, dark fish in the upper right and a smaller, striped fish in the lower right. The reef structure is visible in the background, with coral and other marine life.

**We must remove these sewer outfalls  
from the reefs and adopt AWT for  
Sewage in Southeast Florida**

**WONE**

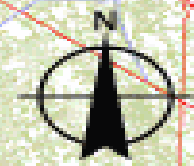
# **Harmful Algae Blooms Smothering and Killing our Reefs**



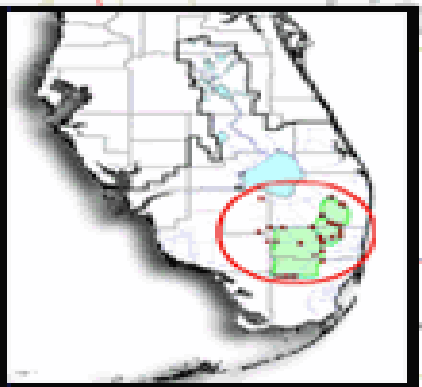
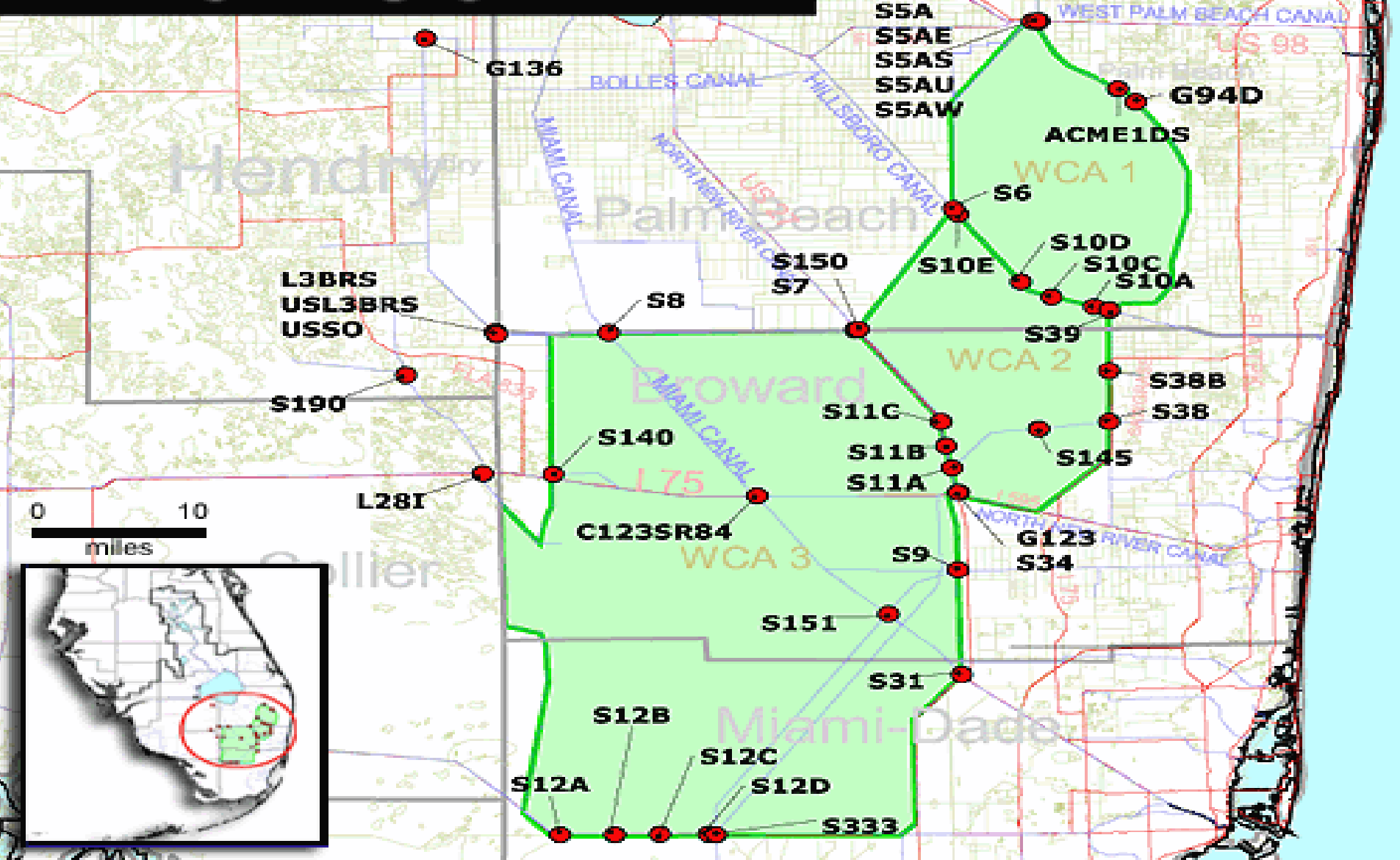
# Impacts from CERP

- Billions of gallons of polluted water from Lake Okeechobee and the Everglades Agricultural Area are being diverted from the Everglades and flushed to tide contributing to Harmful Algae Blooms and Red Tide

# Conservation Area Inflows / Outflows



Water Quality Monitoring Project Area

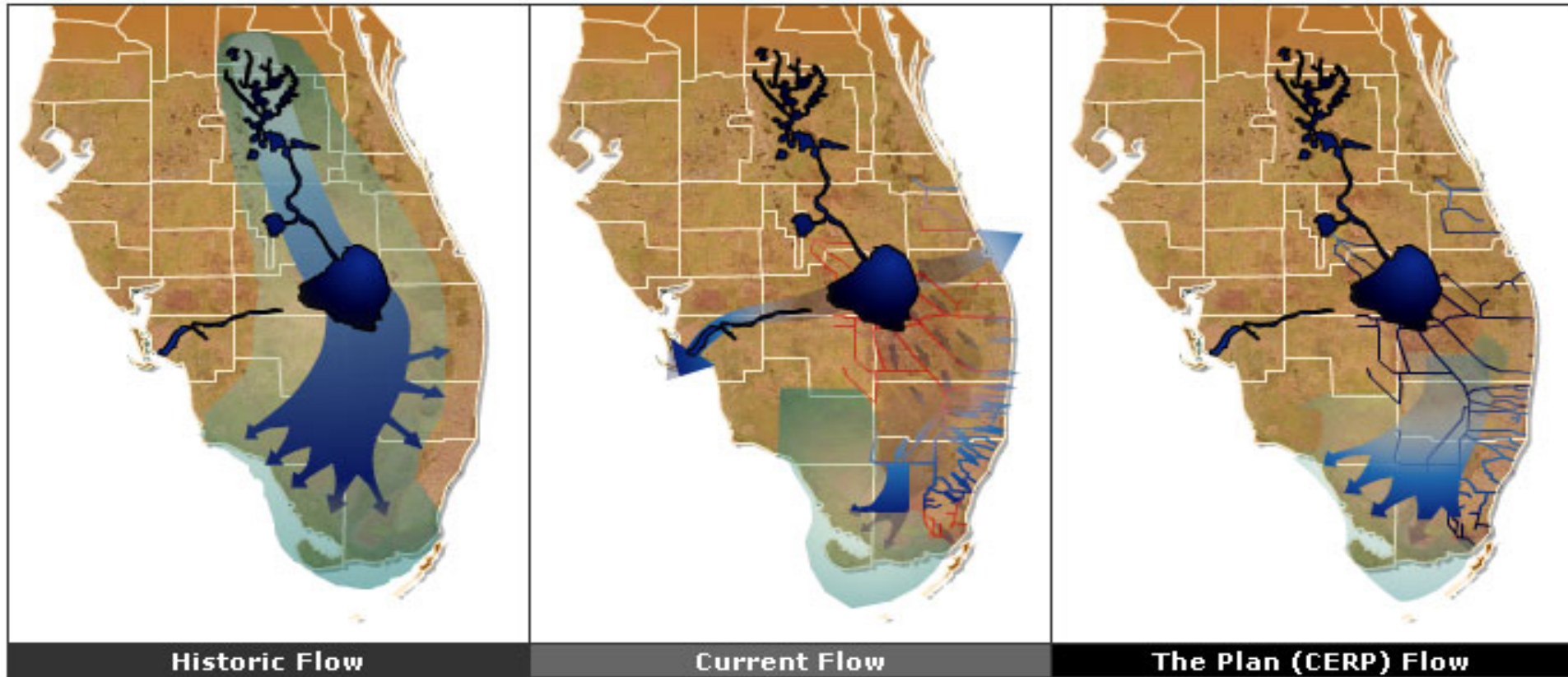




# S-38 Spillway from Conservation area 2



# Until ASR Wells are complete approximately 1.6 Billion Gallons a Day are being put to Tide



SOURCE: [WWW.EVERGLADESPLAN.ORG](http://WWW.EVERGLADESPLAN.ORG)

Currently there is a lack of Storm Water Treatment Areas to filter water being put to Tide

Resiliency ?

# Resiliency ?

- With all the Water Quality Issues affecting our reefs it is no wonder FDEP is supporting this resiliency program.
- For the past 2 years we have seen bleaching and harmful algae blooms impact the Nearshore reefs during summer.
- Fortunately we have been impacted by multiple hurricanes the past 2 years that have cooled the waters, reduced the bleaching and scour the reef removing much of the algae.

# We are not Banking on Resiliency

- We believe the mortality rates of corals would have been much higher if we were not impacted by the storms.
- Ironically though we have 3 boats to look after, a temporary roof on our building and no air conditioning from last years storms, we are not banking on Resiliency we are hoping for the end of season hurricanes to cool the water and scour the reefs clear of algae.



**For Additional Information Contact**

**Cry of the Water**

**Dan Clark**

**[Reefteam2@yahoo.com](mailto:Reefteam2@yahoo.com)**

**[www.cryofthewater.org](http://www.cryofthewater.org)**

**954-753-9737**

**P.O. Box 8143**

**Coral Springs, Fl 33065**